



# SGT UNIVERSITY

SHREE GURU GOBIND SINGH TRICENTENARY UNIVERSITY

(UGC Approved)

Gurugram, Delhi-NCR

Budhera, Gurugram-Badli Road, Gurugram (Haryana) – 122505 Ph. : 0124-2278183, 2278184, 2278185

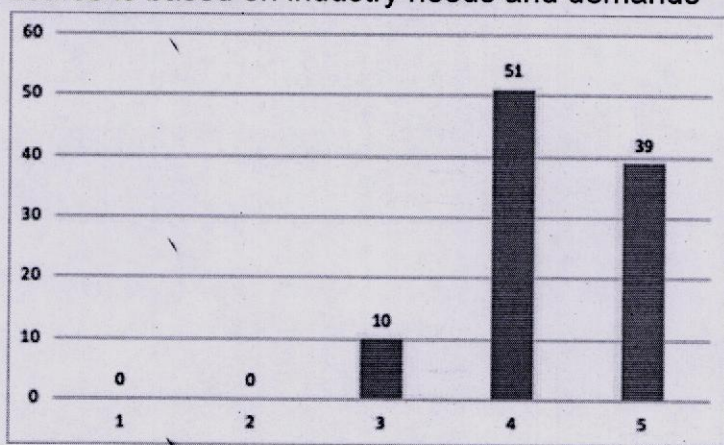
## TEACHER'S FEEDBACK ABOUT CURRICULUM COMPILED

Engineering & Technology

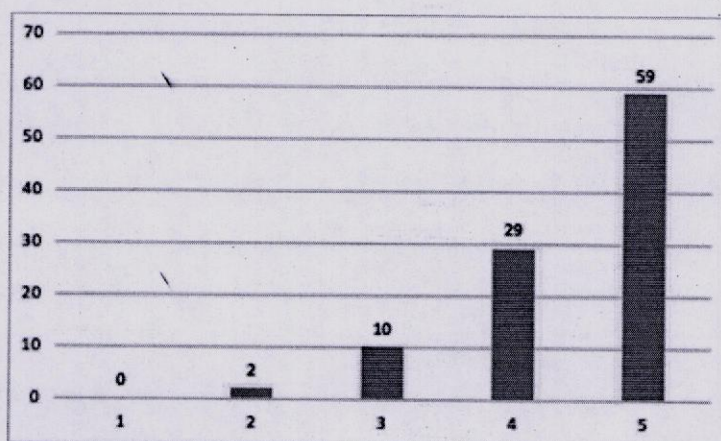
TOTAL NUMBER OF RESPONSES- 51

Response scale is 1= Poor, 2=Fair, 3= Good, 4= Very Good, 5= Excellent

1. Content of course is based on industry needs and demands



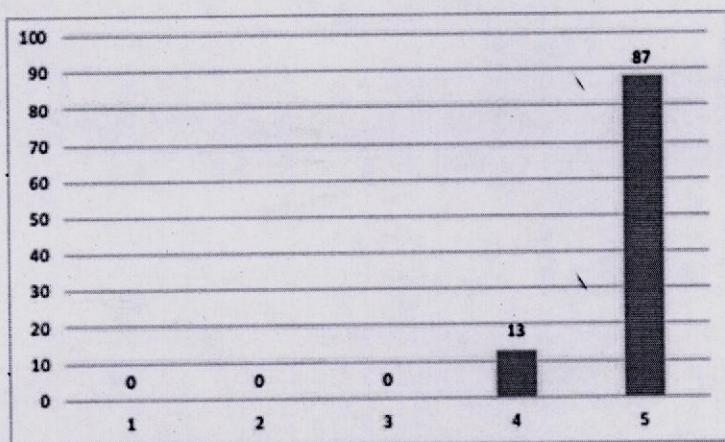
2. Course has good balance between theory and practical application



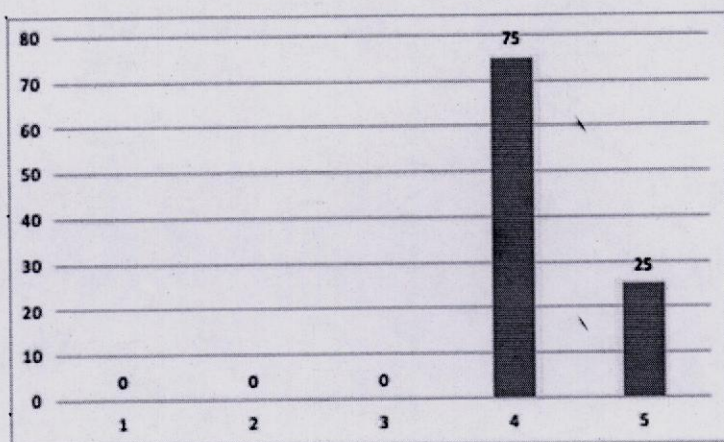
3. Course content stimulate my interest in the subject area

Registrar  
SGT University  
Budhera, Gurugram

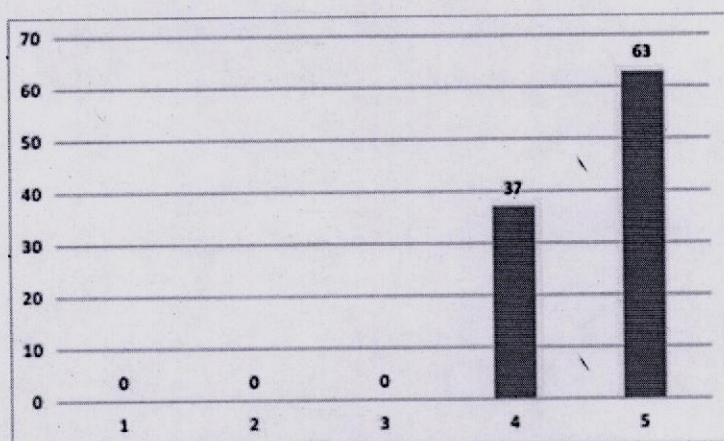
Note:- All graphs presents values in percentage.



4. Employability is given weightage in curriculum design and development.



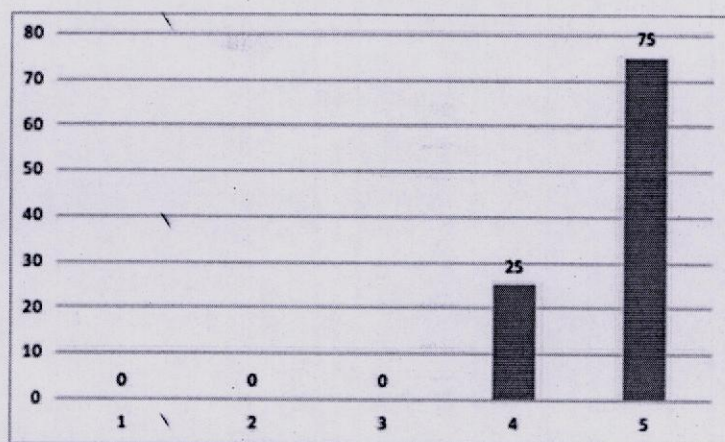
5. The curriculum is updated time to time



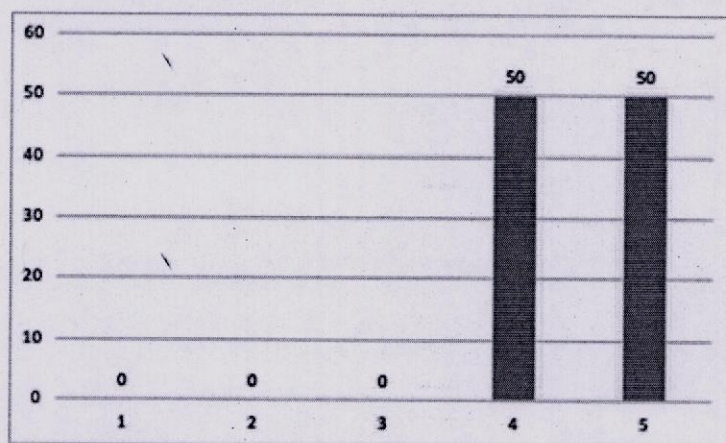
6. Freedom to propose, suggest, modify topics in syllabus/ course content

Registrar  
 GGS Indraprastha University  
 Block-1, Gurugram

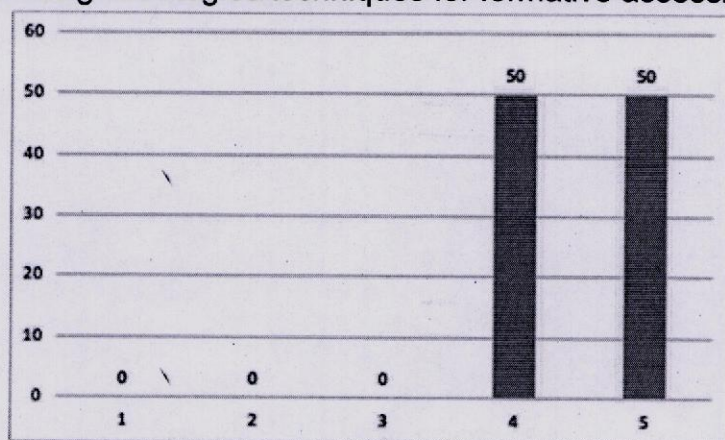
Note:- All graphs presents values in percentage.



7. Freedom to innovate and adopt new teaching strategies/methods



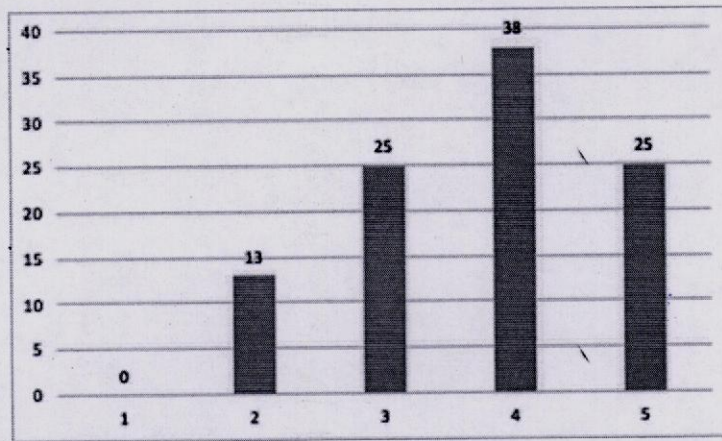
8. Freedom to design strategies/techniques for formative assessment



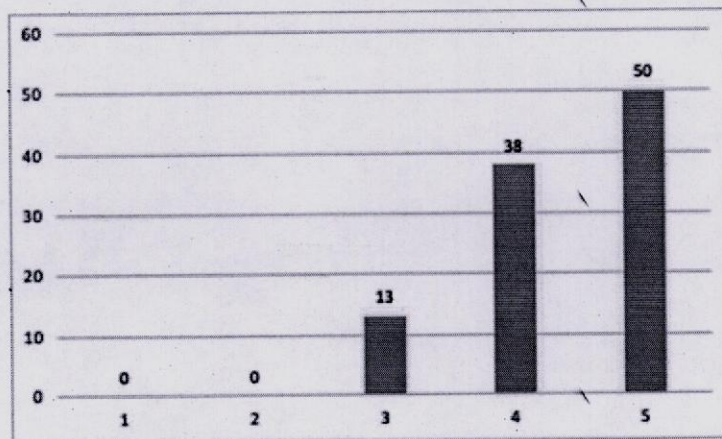
9. Adequate number of reference books are available in Library

**Registrar**  
SGT University  
Budhera, Gurugram

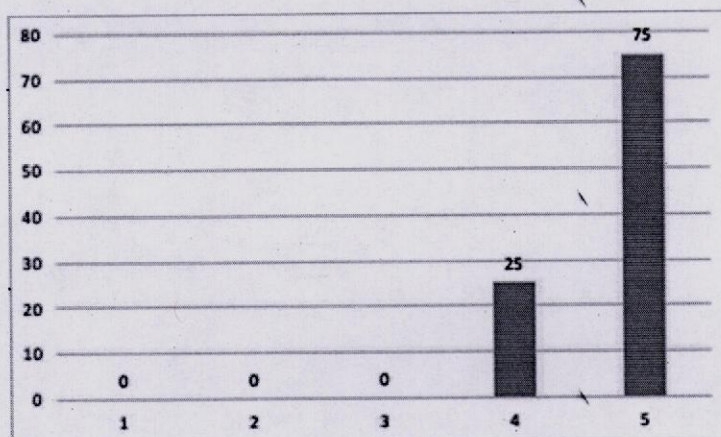
Note:- All graphs presents values in percentage.



10. Appropriate Teaching aids(audio-visual) are available in lecture theatres



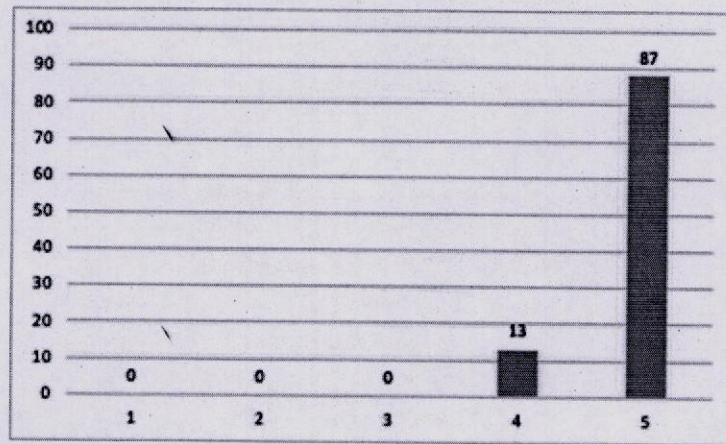
11. Internal/sessional examinations are conducted in time with adequate coverage of all syllabus



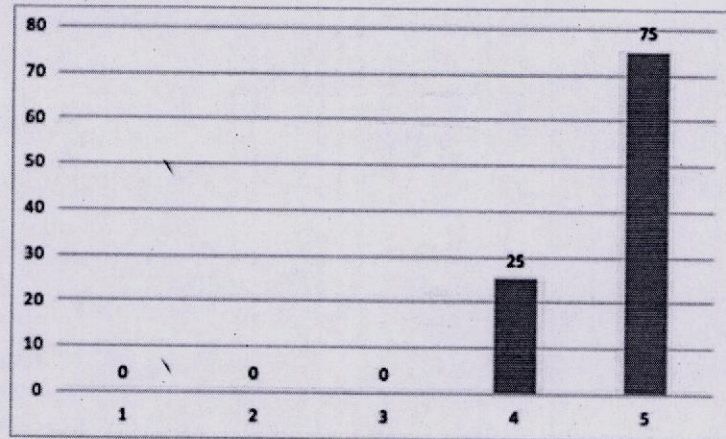
12. Level of satisfaction with Examination reforms- Percentage of theory and practical

Note:- All graphs presents values in percentage.

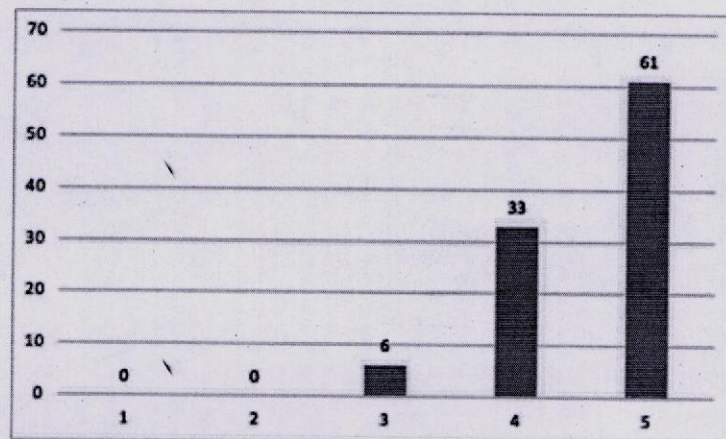
Registrar  
SGT University  
Budhera, Gurugram



13. Level of satisfaction with the inclusion of Objective type questions in examinations



14. Rate your level of satisfaction with the examination and evaluation pattern of the University



15. Overall environment in the department is conducive to teaching and learning

Note:- All graphs presents values in percentage.

**Registrar**  
SGT University  
Budhera, Gurugram